

Aquidneck Island Transportation Study

On the move...connecting our communities



Unlocking Economic and Community Benefits Through Regional Transportation Planning

Power of Place Summit, May 11, 2012

Moderator: Tina Dolen, Executive Director, Aquidneck Island Planning Commission

Panelists: William Ashworth, Principal and Rhode Island Office Manager, Vanasse Hangen Brustlin,

Corey Bobba, Program Delivery Team Leader, Federal Highway Administration,

Chris Witt, Director of Planning and Communications, AIPC

Implementation Summary

The Aquidneck Island Transportation Study, completed in July 2011, was the first comprehensive, multi-modal transportation plan completed for the island. It included twenty-five substantial recommended improvements in three areas: transit, bicycle/pedestrian, and roadways.

This document provides a summary of the study recommendations that are currently in implementation.

Please visit www.aquidneckplanning.org or contact AIPC at 401-845-9299 for more information on the Transportation Study.

TRANSIT IMPROVEMENTS

Encourage Transit Oriented Development

In 2011 the Town of Middletown developed and adopted the West Main/Coddington Development Center Master Plan, which presents a vision for a vibrant, walkable town center at the corner of West Main Road and Coddington Highway. As described in the plan, the area would incorporate dense, mixed-use development on land along West Main Road and adjacent to a redesigned Two-Mile Corner (intersection of East and West Main Roads) as recommended in the Island Transportation Study. The town worked with the firm Vanasse Hangen Brustlin (VHB), which also helped develop the Island Transportation Study. Middletown will use the Master Plan to guide the redevelopment of public and private land in the area.



Town of Middletown



Aquidneck Island
Planning Commission

Enhance Ferry Service

In 2010 and 2011, the City of Newport completed harbor shuttle system improvements at Perrotti Park, funded in part by the Rhode Island Department of Transportation, including new floating docks, gazebo, ramp system and signage. Newport is now seeking a Coastal Resources Management Council permit to extend the Ann Street Pier, which would allow for better and more frequent access for harbor shuttle vessels in the future. Shuttles will be heavily used this summer for both the America's Cup World Series and Tall Ships events, and improvements are being made to the Fort Adams facility, including landing improvements for harbor shuttles.



PEDESTRIAN/BICYCLE IMPROVEMENTS

Shoreline Bikeway (Burma Road) Shared Use Path

The Aquidneck Island Planning Commission (AIPC) is working with elected officials, state agencies, and BikeNewport, a local bicycle advocacy group to advance the creation of the Shoreline Bikeway. In January BikeNewport led a tour of the proposed right-of-way for local officials, and AIPC will hold a public meeting in conjunction with the RIDOT to describe the history and future of the project.

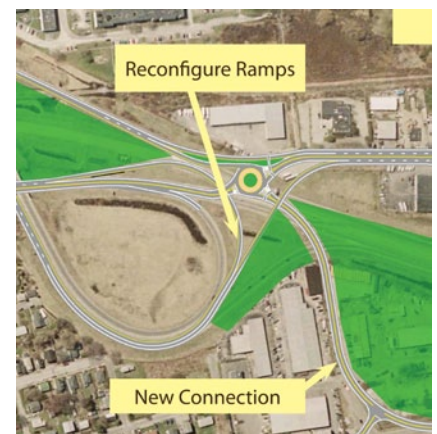
General Upgrades of Pedestrian Accommodations

The Transportation Study recommended immediate-term, high-benefit, and low-cost improvements for intersections across Aquidneck Island to address bottleneck and safety concerns. Based on intersection assessments performed as part of the Rhode Island Strategically Targeted Affordable Roadway Solutions (RI*STARS) program, RIDOT will install new signing, striping, and pedestrian improvements at 25 locations on the island in 2012, including the addition of bicycle lanes on Coddington Highway in Middletown.

ROADWAY IMPROVEMENTS

Pell Bridge Access Improvements

RIDOT, City of Newport, and the Rhode Island Turnpike and Bridge Authority have agreed on the preliminary design for the Pell Bridge improvements. The Newport City Council officially endorsed the design alternative that provides transportation improvements and frees land for redevelopment. RIDOT has received a \$5 million earmark for design of the project, and it has contracted with VHB to complete the task. Newport also received a grant from the Rhode Island Statewide Planning Program to complete a detailed planning assessment and reuse plan of the area in and around the Newport Pell Bridge Ramps, Connell Highway, and the former Navy Hospital.



Traffic Signal Optimization

The Transportation Study recommended the optimization or “fine-tuning” of traffic signals along the island’s major corridors to increase efficiency and reduce delays and greenhouse gas emissions. RIDOT will complete traffic signal optimization projects at the intersections of East Main Road at Boyds Lane and East Main Road at Village Way in Portsmouth by summer 2012.

Two Mile Corner Improvements

The Island Transportation Study included two recommended improvements for the intersection of East and West Main Roads - the construction of two roundabouts or the reconfiguration of the existing signalized intersection – either of which would reduce congestion and improve safety. After a series of public meetings led by the Rhode Island Department of Transportation, the Middletown Town Council chose to move ahead with a redesigned signalized intersection, which will include the installation of additional left turn lanes and upgrades to the traffic signals. RIDOT is obtaining right of way for the project, and it expects to begin construction in 2013 or 2014.



Broadway Streetscape and Traffic Calming Improvements

The City of Newport has completed the Preliminary Design phase of a project for Lower Broadway. The City Council endorsed it and also approved a contract to move into the Final Design phase for the project. 90% plans have been completed and submitted to RIDOT for review. RIDOT has agreed to fund the construction of the project. The project will include streetscape improvements and modifications to sidewalks, crosswalks, bump outs, lighting, parking, biking, curb cuts, street furnishings, narrowed travel lanes, storm water, green space/vegetation, and overall improvements that will provide more dedicated land area for pedestrians.



City of Newport

West Main Road Left Turn Lanes

The Transportation Study recommended the construction of left-turn lanes at key intersections on the island to improve safety and lessen congestion. As part of a larger West Main Road resurfacing project, RIDOT will install left turn lanes at the intersections of West Main Road and Raytheon Drive and West Main Road and Union Street. Construction is expected to begin in 2014 or 2015.

